

Synergies and complementarities between ESIF and Directly Managed Funds

Romanian experience

November 8, 2018, Bratislava

Institutional framework in Romania



Ministry of European Funds

- Overall coordination of Cohesion Policy
- Managing Authority for several OPs
- Overall coordination of the participation in directly managed programmes

Ministry of Regional Development and Public Administration

- Managing Authority for Regional OP, Administrative Capacity OP
- Managing authority/National Authority for ETC programmes

Ministry of Agriculture and Rural Development

- Managing Authority for National Rural Development Plan
- Managing Authority for Fisheries OP

Line ministries

- Contact points for directly managed programmes

Main tasks of the Ministry of European Funds

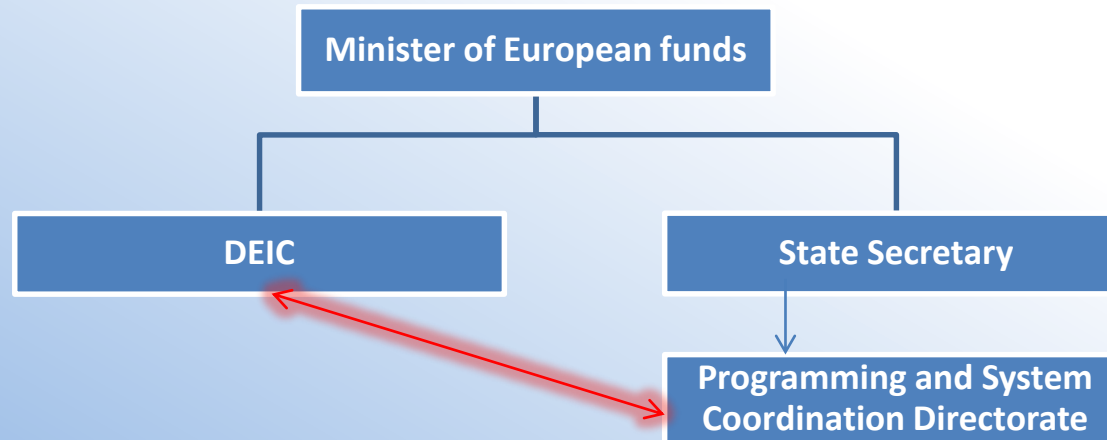
Cohesion Policy

- programming of ESIF
- coordination of legal, procedural and institutional framework for the implementation of ESIF

Directly managed funds

- methodological coordination and monitoring the RO participation in community programmes and initiatives

Directorate of European and International Cooperation (DEIC)



- **DEIC** was established in April 2018 and starting with August it is under the direct coordination of **the Minister of European Funds**
- This newly created structure fulfills part of the responsibilities that were undertaken by the **Programming and System Coordination Directorate**

Specific tasks related to directly managed programmes

verification of the complementarities with ESIF

facilitation of the communication between line and EU institutions

implementation of the monitoring/reporting mechanism by the line institutions

endorsement the drafts legal acts related to RO participation in community programmes

mapping the financing oportunities within the community programmes


Coordination – general considerations

- **In programming** - synergies between ESIF, other EU instruments/programmes and national programmes were taken into consideration
- **In implementation:**
 - ❖ various Functional Working Groups constituted to manage the implementation of the Partnership Agreement (the third level of coordination)
 - ❖ internal consultation between MAs before launching specific calls for proposals in order to correlate them (health, social, education)

Partnership Agreement

- PA **provides the legal provisions** for achieving complementarities and synergies
- According to the PA, the efficient and synergistic use of ESI Funds, national and Directly Managed Funds **amplifies the impact of development investments** in all areas
- Complementarities and synergies provided in the PA have as the purpose **to avoid the double financing**

Coordination – general considerations



Strengthening the complementarity between non-reimbursable grants from shared managed programs/directly managed funds and national budget funding **was and is one of the guiding principles behind the strategic vision for economic, social and territorial cohesion at the level of Europe**

Examples of synergic and efficient use of all funding opportunities

- programming period 2014-2020 -

- **Research, Development and Innovation**

Competitiveness OP provides support to the participation in Horizon 2020 (excellence centers)

- **Small and Medium Size Enterprises**

Regional OP, Human Resources OP interventions create synergies and complementarities with COSME and National program for Start-Up Nation

- **Education**

Human Resources OP, Regional OP (infrastructure) are complementary to ERASMUS

- **Environment**

Large Infrastructure OP supports complementary actions for LIFE projects in relation to the Nature 2020 plans and strategies

Research, Development and Innovation

- Complementarity and synergy between ESI funds and Horizon 2020 is provided through the **National Research, Development and Innovation Strategy for 2014 -2020 (SNCDI 2020)**
- SNCDI 2020 uses as the main sources of funding **Competitiveness OP** and **National Research Plan**, thus ensuring **co-financing for participation in Horizon 2020** (e.g. excellence centers, specialists Network, Monitory, E-lead).
- Competitiveness OP also provides funding for pan-european infrastructures built in Romania (e.g. ELI-NP, Danubius Center).
- **Ministry of Research and Innovation** monitor the participation of Romanian organizations at Horizon 2020.

Small and Medium Size Entreprises

- **The interventions funded from ESI Funds addressing to SMEs, namely Regional OP, Human Resources OP, create synergies and complementarities with COSME - the Competitiveness of Enterprises and Small and Medium Enterprises Programme, and National program for Start-Up Nation**
- Through this National Program 10,000 SMEs, set up after 2017, receive funding of up to 200,000 lei each, from the state budget.

Education

- **ESI funds** (Human Resources OP, Regional OP - infrastructure) are **complementary to Erasmus**
- **Complementary areas to Erasmus:** employment, research and innovation, industry and entrepreneurship
- On the other hand, programs like "University and post-university education in Romania" or "Granting school supplies" are financed from **the state budget**
- **Coordination at national level** is provided by the National Agency for Community Programs in the Field of Education and Vocational Training
- Romania benefited from EUR 320,685,066 through the ERASMUS
- Average absorption rate of 98.7%
- Almost 4000 projects funded

Environment

- The availability of **ESI Funds** (Large Infrastructure OP) for actions complementary to projects under the LIFE programme 2014-2020 supports, in particular, **integrated projects implementing EU plans or strategies in the areas Nature 2000** (Prioritised Actions Plans)
- LIFE programme is complementary to **the Environment Fund**, a national funding instrument. For example, **programs on environmental education**, which LIFE programme does not fund.
- **The Ministry of Environment** is the National Contact Point for LIFE Programme

Post 2020 programming period

- **The legislative package proposed by the COM aims to provide flexibility and interdependence between sources and funding instruments**
- **In order to prepare the national programming documents, MEF initiated a Memorandum that was approved at the Government meeting on 5 September**
- **According to this MEMO, measures and deadlines are set for the development of sectoral post-2020 strategic documents, including the prioritization of investment needs based on realistic identification of funding sources.**

Post 2020 programming period

- We expect these national strategic documents to propose **sectoral investment programs financed from the state budget, complementary to eligible interventions from European funds 2021-2027 and other EU directly managed funds**, so that the economic and social impact of the funding is sustainable in the long run
- Of course, in the development of post-2020 operational programs, **avoidance of overlaps between the different funds and instruments**, especially with regard to the type of support and the target groups, **will be taken into account.**

Thank you for attention!

**Directorate of European and International
Cooperation**

**MINISTRY OF EUROPEAN FUNDS
ROMANIA**

www.fonduri-ue.ro

**Do not hesitate to contact us if you have any further
questions**

dcei@fonduri-ue.ro